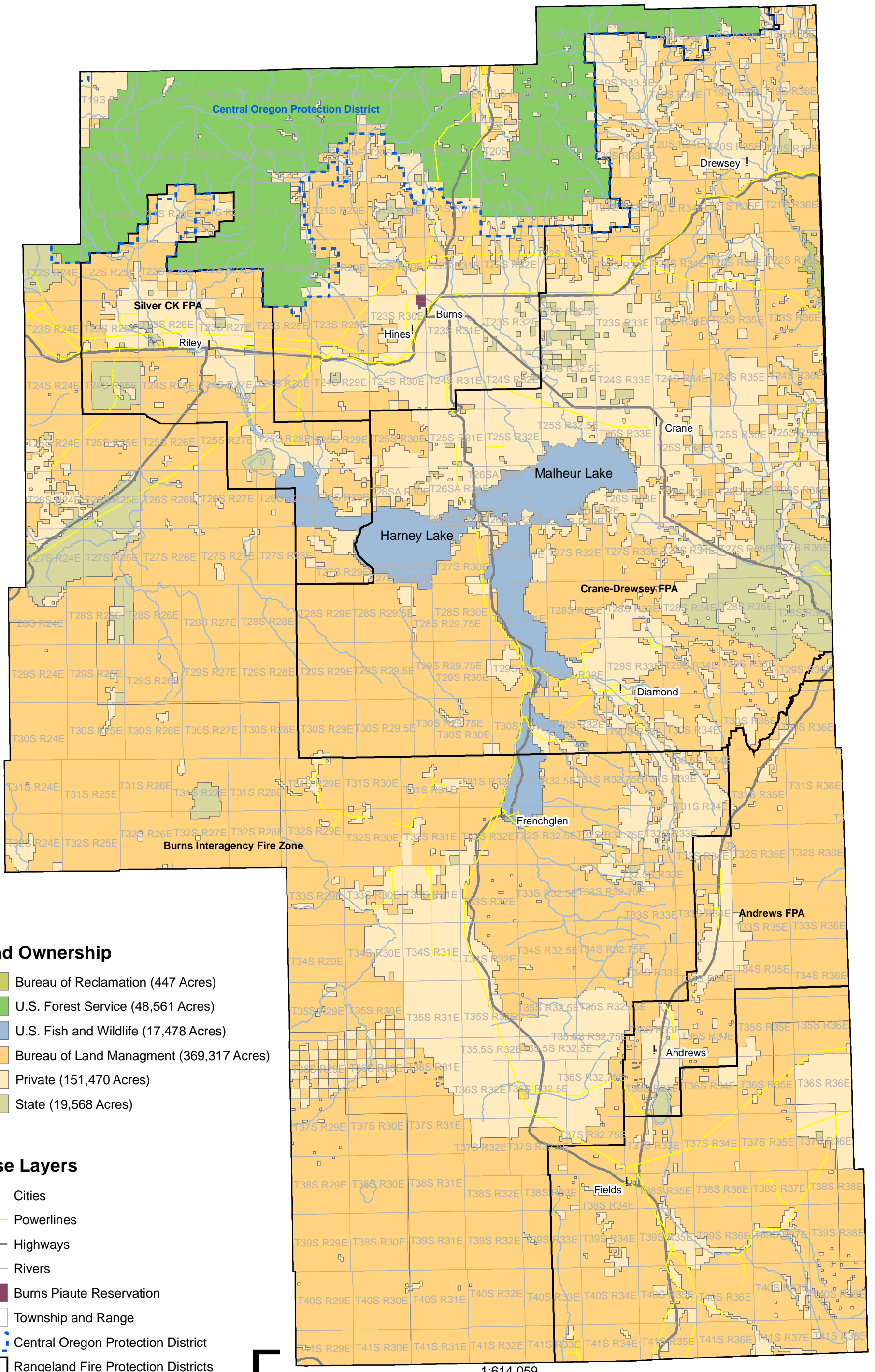


Map 1 Harney County Landownership & Fire Protection Authorities



Land Ownership

- Bureau of Reclamation (447 Acres)
- U.S. Forest Service (48,561 Acres)
- U.S. Fish and Wildlife (17,478 Acres)
- Bureau of Land Management (369,317 Acres)
- Private (151,470 Acres)
- State (19,568 Acres)

Base Layers

- Cities
- Powerlines
- Highways
- Rivers
- Burns Piante Reservation
- Township and Range
- Central Oregon Protection District
- Rangeland Fire Protection Districts

F

1:614,059

