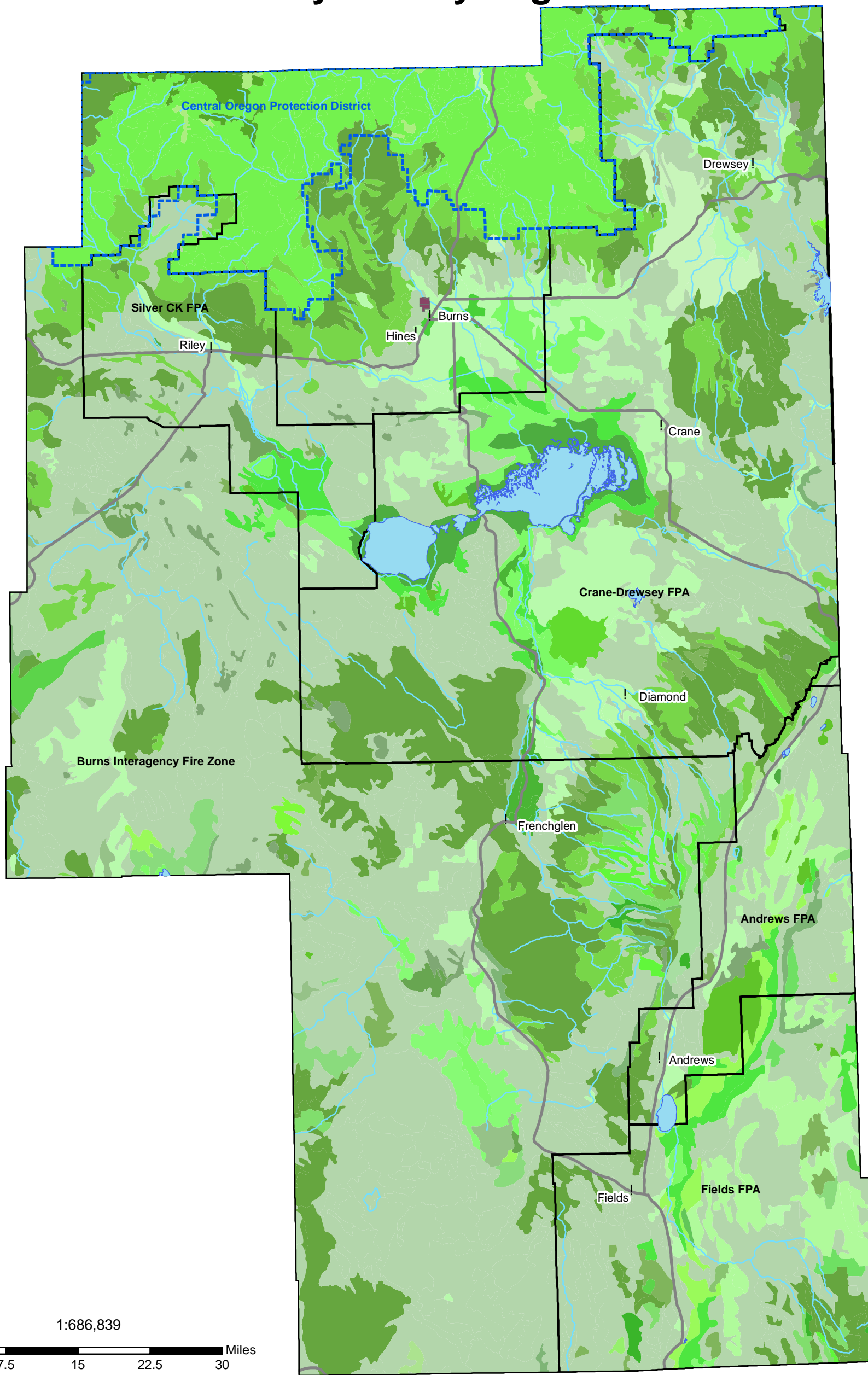


Map 2 Harney County Vegetation



- | | | | |
|---|--------------------------------------|--------------------------------------|-------------------------------------|
| Agricultural cropland and pastureland | Budsage | Ponderosa pine forest and woodland | Urban and industrial |
| Alkaline grasslands and seasonal wetlands | Curleaf mountain mahogany | Quaking aspen groves | Western juniper |
| Annual grasslands | Hardstem bulrush | Recent timber harvest areas | Willow species floodplain riparian |
| Bare playa | Inland sand dunes | Rigid sagebrush | Winterfat |
| Big sagebrush | Low sagebrush | Rimrock and canyon shrubland | Cities |
| Big sagebrush ash beds | Montane and alpine fescue grasslands | Saltsage | Highways |
| Big sagebrush lava fields | Mountain big sagebrush | Sandberg Bluegrass | Rivers |
| Black greasewood | Mountain mahogany | Shadscale | Burns Paiute Reservation |
| Black greasewood playa or bottomland | Mountain snowberry | Shadscale | Central Oregon Protection District |
| Black sagebrush | Open water | Silver sagebrush playa or bottomland | Rangeland Fire Protection Districts |
| Bluebunch wheatgrass | Perennial bunchgrass seedings | Spiny hopsage | |
| Bottlebrush squirreltail | Ponderosa pine | Three | |

