

How do I request a ride?

Call 541-573-3030

Have all your ride information ready before dialing: time of your appointment, date, exact addresses and length of visit-if known.

If you have mobility aids, please tell us.

You may call for a reservation up to two weeks in advance of your appointment. Same day requests are provided only if space is available.

If you are sure of your return time, request the return ride also. To schedule a time for your ride, you will need to call 541-573-3030.

Hours of Operations

The hours of operation are:

7:00am-7:00pm Monday-Friday

8:00-5:00 Saturday

8:00-3:00 Sunday

After hours there is an answering machine available to take messages or notify staff of cancellations.

No rides are provided on holidays.

What does it cost?

0-10 mi. \$1.00 per stop is required.

11-20 mi. \$5.00 one way upon availability

21-35 mi. \$10.00 one way upon availability

36+ mi. \$10.00 plus \$.505 per each additional mile one way upon availability

SCHEDULED BEND TRIP:

\$35.00 round-trip to Bend

\$18.00 one way and \$8.00 errand in Bend

SPECIAL TRIP upon Availability:

John Day \$55.36 Round Trip

Bend or Ontario \$115.96 Round Trip

Extra Rider on Brokered Trip:

John Day \$25

Bend or Ontario \$35

Harney County Dial-a-Ride

17 S. Alder

Phone: 541-573-3030



Harney County Dial-a-Ride

541-573-3030

Curb to Curb

Wheelchair Accessible

Public Transportation

For Harney County

&

Weekly Scheduled Trips to

Bend



Mission Statement

The mission of the Harney County Dial-a-Ride is to provide a safe **public transportation** service that supports the economic, social, and environmental needs of Harney County.

Everyone is welcome!

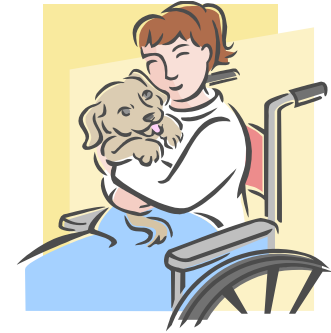
What is Dial-a-Ride?

The Harney County Dial-a-Ride program is a city-wide **public transportation** service, providing curb-to-curb transportation to doctor appointments, banking, shopping, and all other needs.

All vehicles are ADA accessible.



Call 541-573-3030 to schedule your Ride.



Who is eligible to use this service?

The Dial-a-Ride service is available to **The Public**.

Local Service Area:

Countywide service which prioritizes demand responsive trips within a 10 mile radius of Burns/Hines and providing occasional charter service to events and activities in Harney County.

Weekly scheduled trips to Bend, with unscheduled trips out of the area to be advertised on the buses.