

How to review and find county owned land!

There are no County Land Sale Auctions Planned at this time.

Even though there aren't any planned county auctions at this time you can apply to bring a county owned parcel to auction. Click: [Application to Purchase County Owned Land](#).

Click to [View the Land Sale Policy](#)

View Current Land Sale List [Harney County Land Sale List](#)

View Land Sale Online Map <https://arcg.is/11TOub>

View Current List of Possible Available County Lands

Welcome to Harney County

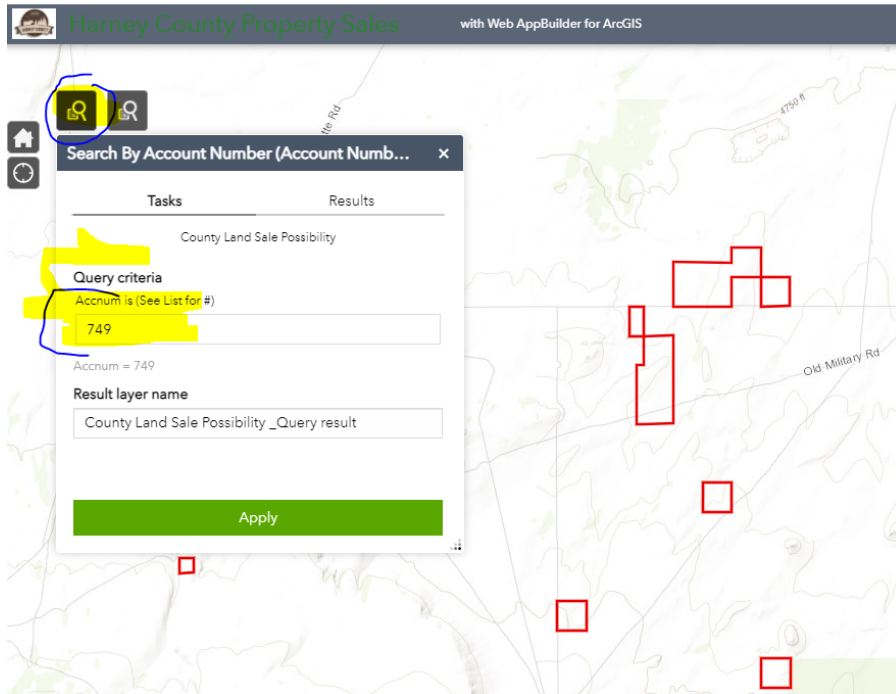
Welcome to Harney County Property Sales

Click on links for a copy of County Documents:

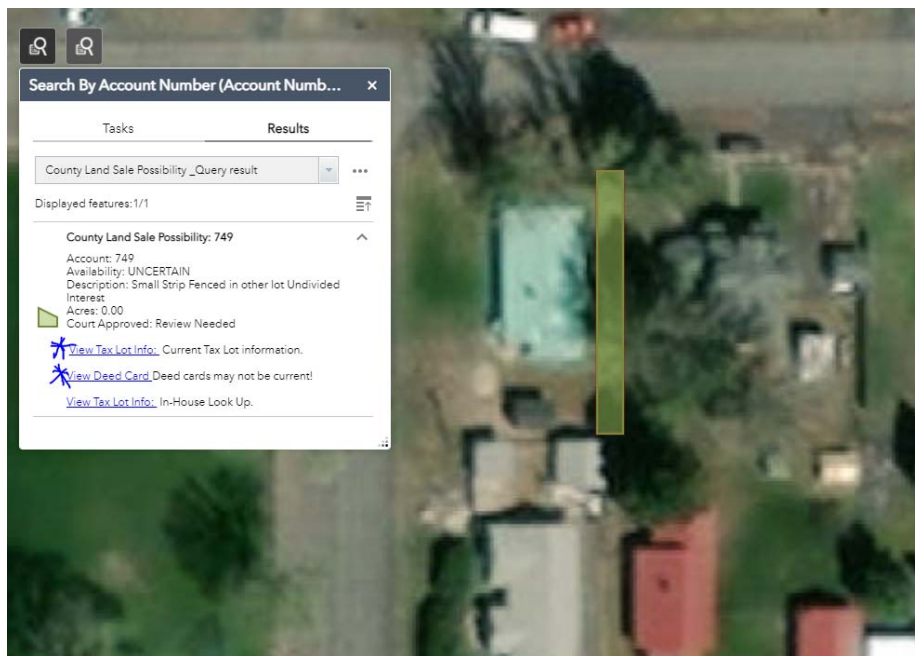
- [County Owned Land Sale Policy](#)
- [Application to purchase County Owned Land](#)
- [Current County Owned Properties List](#)
- [County Land Sale Link](#)

Search for current county owned, foreclosed, real property by search tools on the top left of the screen.
Use Layer List to review other information.

Search map for locations of Possible Available County Lands by entering the Account Number.



View County Parcel, after entering the parcel account number hit reply. Map will zoom to parcel and give you the option to view additional information about the parcel, e.g., "Real Market Value". [Parcel Look up Link](#)



Click the layer list and view additional layers and information

